

# CERTIFICATE OF LOCATION OF GOVERNMENT CORNER

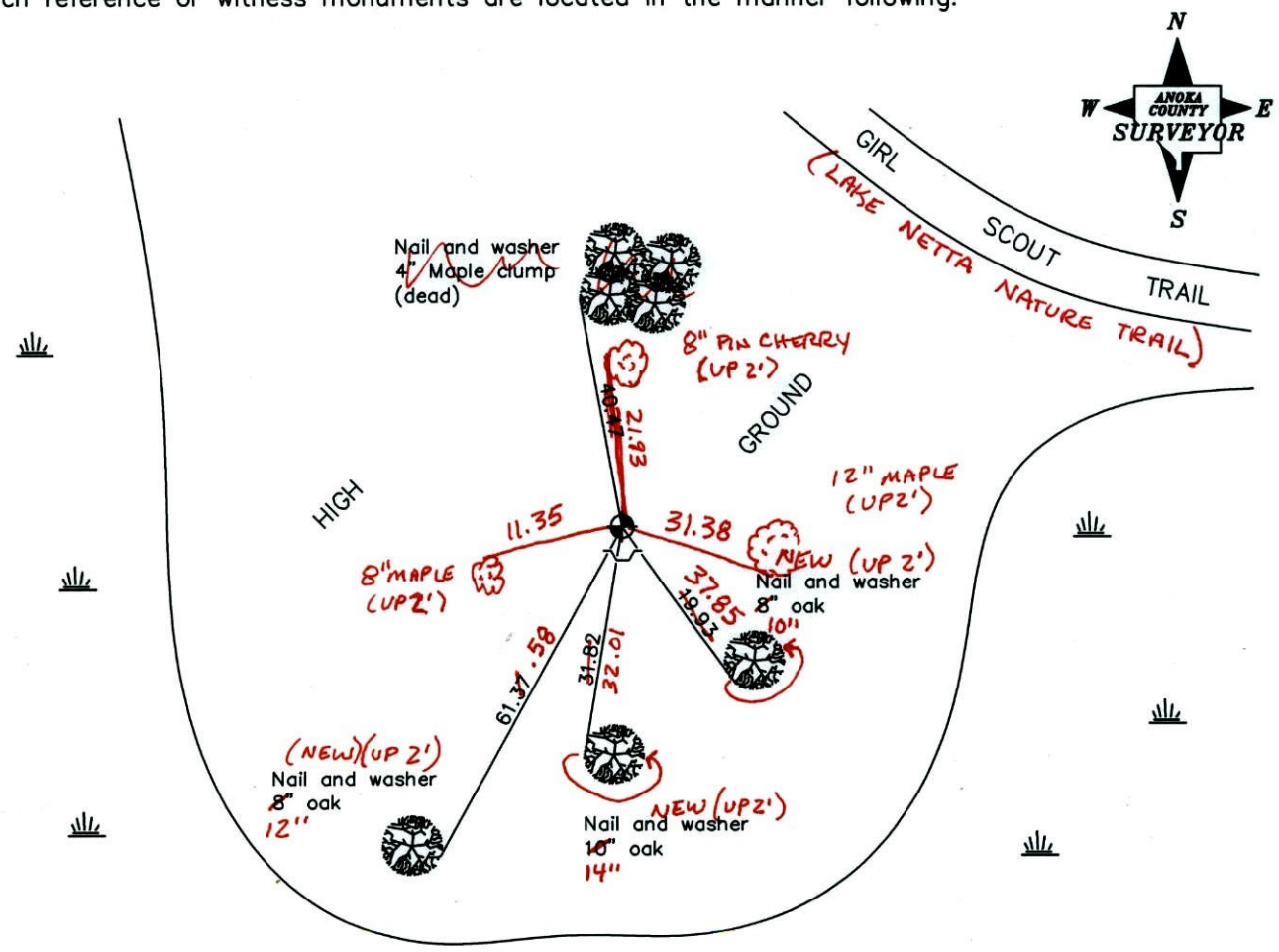
County of Anoka                      State of Minnesota

Witness Corner of Sec. 15 Township 32 Range 23  
 on North line of NW1/4

I hereby certify that on the 25th day of May, 1977, I found the described corner which was evidenced by area resurvey

and I further certify that to perpetuate the location of said corner, I did, at the exact location thereof, place a permanent marker consisting of a cast iron monument with sign and post on the south side

which reference or witness monuments are located in the manner following:



**BK-55  
 TAPED**  
 Revised date

4/02/86
11/19/91
8/26/96
<b>4-5-11</b>

N.A.D. 1983 Coordinates  
 (1996 adjustment)

County Project Coordinates Northing <u>185409.1360</u> Easting <u>516921.6196</u>	State Plane Coordinates Y _____ X _____
---	---

Date 1/16/02

# CERTIFICATE OF LOCATION OF GOVERNMENT CORNER

County of Anoka

State of Minnesota

W.C. ON NORTH LINE Corner of Sec. 15 Township 32 Range 23

of NW 1/4

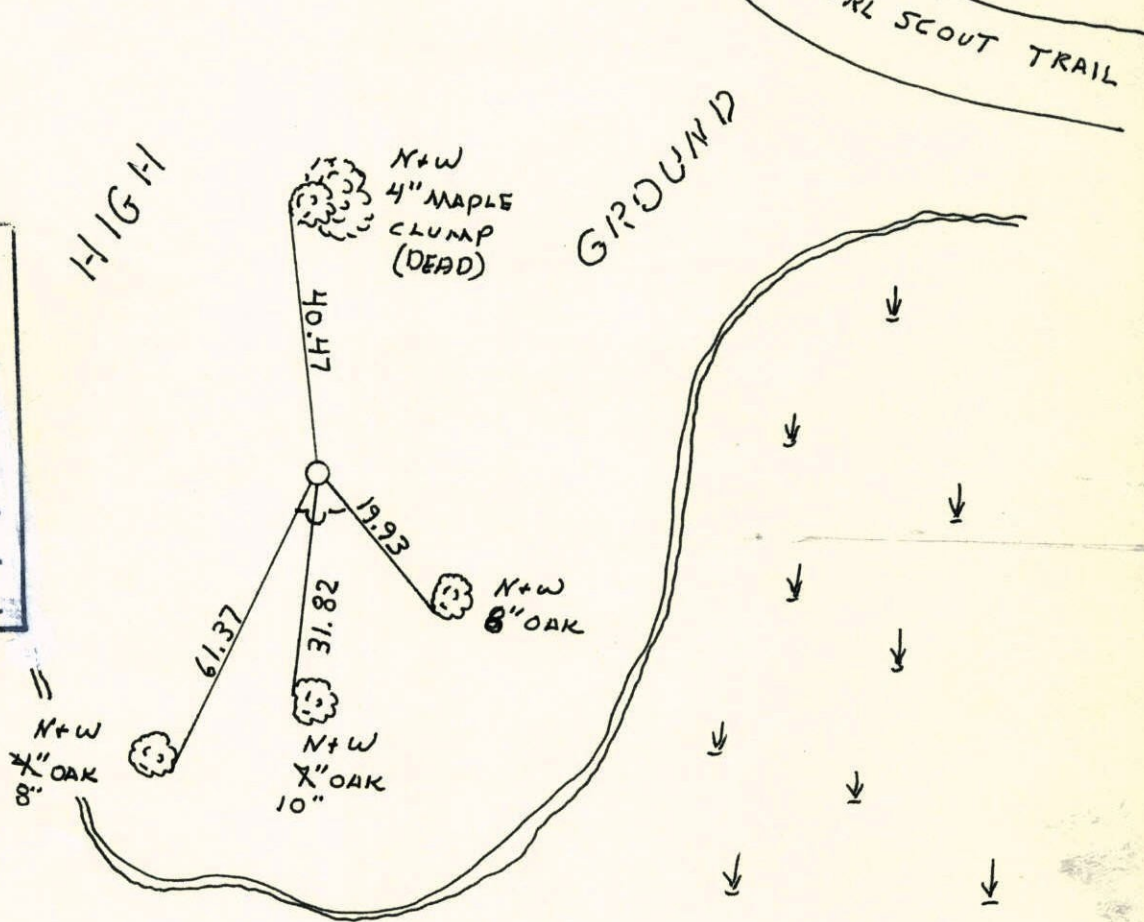
I hereby certify that on the 25<sup>TH</sup> day of MAY, 1977, I found the described corner

which was evidenced by AREA RESURVEY

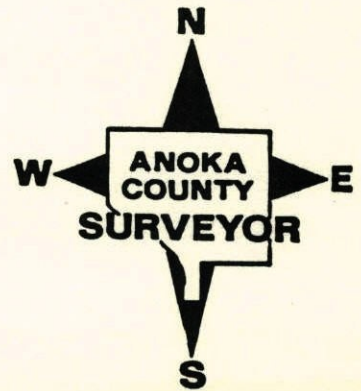
and I further certify that to perpetuate the location of said corner, I did, at the exact location thereof, place a permanent marker consisting of CAST IRON MONUMENT SIGN AND POST ON SOUTH SIDE

which reference or witness monuments are located in the manner following:

N.A.D.	1983	Co-ordinates
County	Project	Co-ordinates
Northing	185409.1360	
Easting	516921.6196	
State Plane Co-ordinates		
Y	_____	
X	_____	
Date	_____	



Revised date	Revised date	Revised date
4-2-86		
11-19-91		
8-26-96		





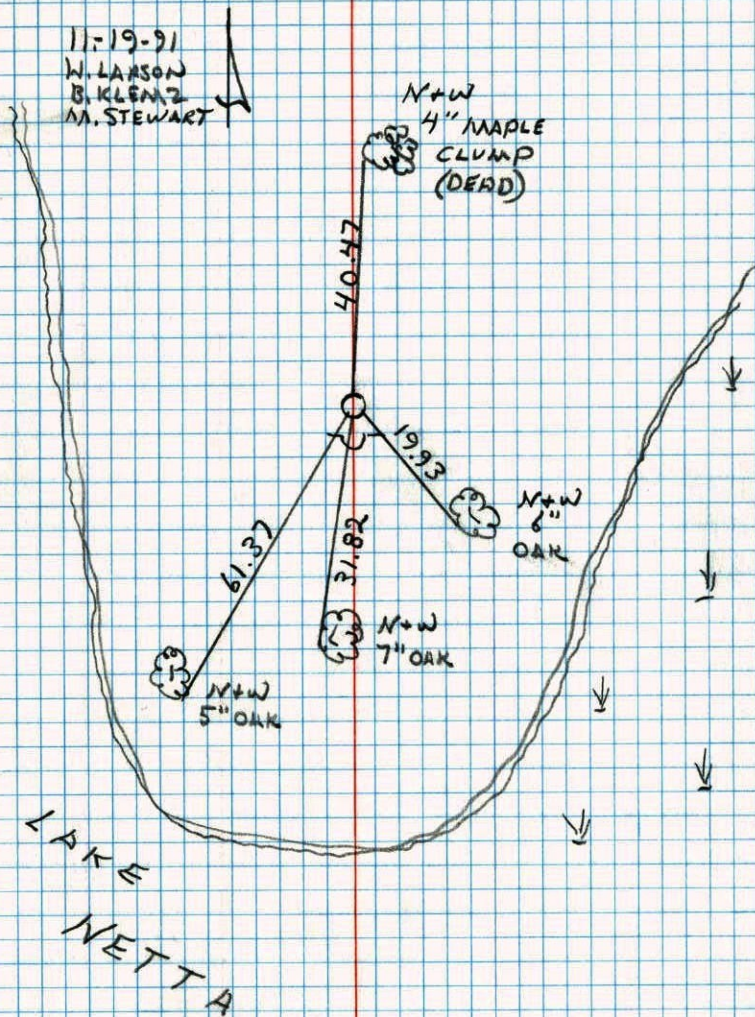
WC. ON NORTH LINE OF NW 1/4 SEC. 15

T32 R23

RETIED C.I. SIGN + POST ON SOUTH SIDE.

11-19-91

W. LARSON  
B. KLENZ  
M. STEWART



WC ON NORTH LINE OF NW 1/4 SEC. 15 T32 R23

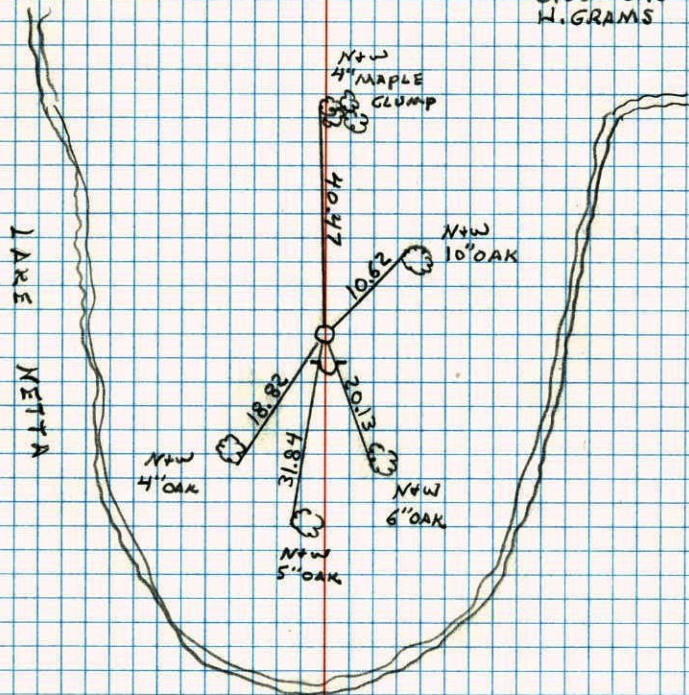
RETIED DUE TO STORM DAMAGE TO TREES

PUT SIGN AND POST ON SOUTH SIDE.

#3 50°

4-2-86

W. LARSON  
B. GUETZK.  
H. GRAMS



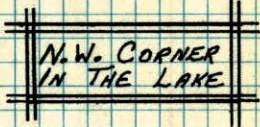


# W.C. ON NORTH LINE OF NW 1/4

## SEC 15 T32 R23

SET CAST IRON MONUMENT FROM AREA RESURVEY.  
CAST IRON FLUSH WITH SIGN AND POST ON NORTH SIDE.

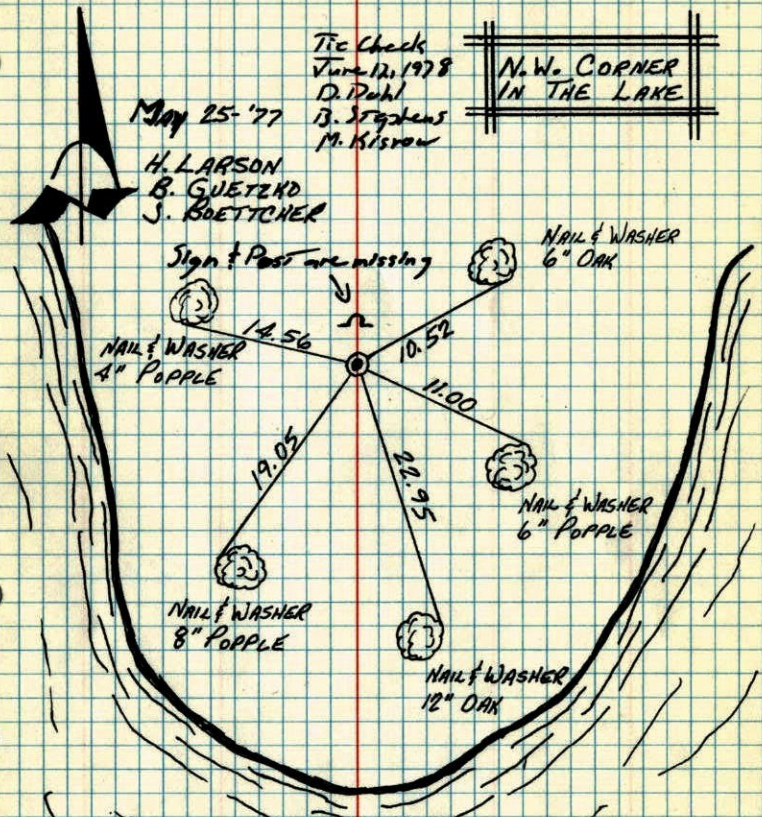
Tie Check  
June 12, 1978  
D. Dahl  
B. J. Stephens  
M. Kisrow



May 25-'77

H. LARSON  
B. GUETZKO  
J. BOETTCHER

Sign & Post are missing



# LAKE NETTA

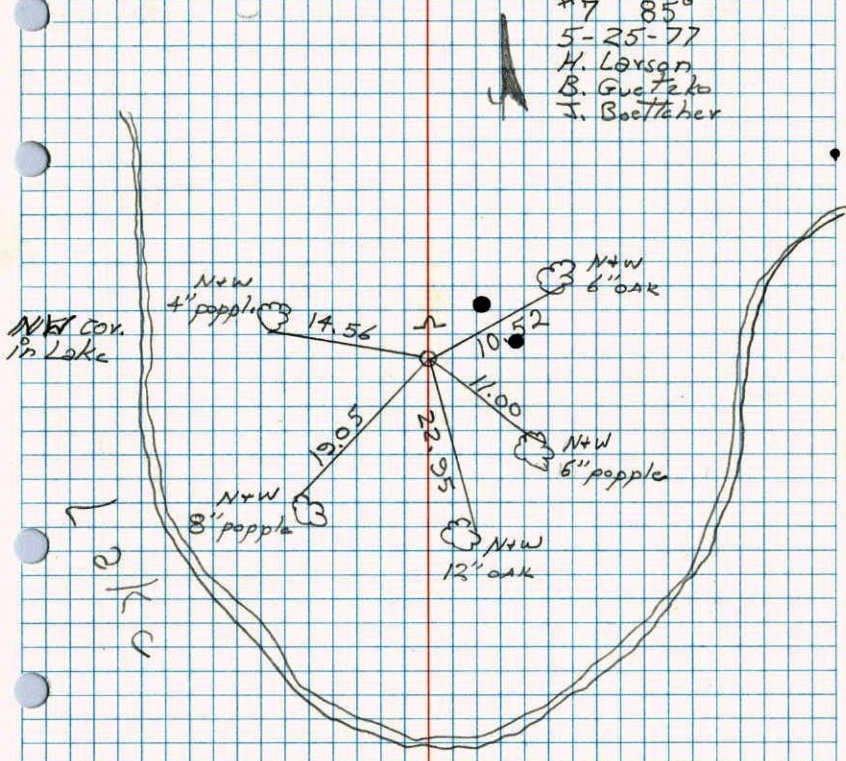
TEMPERATURE CORRECTED  
AND HORIZONTALLY  
TAPED MEASUREMENTS

ROLAND W. ANDERSON  
COUNTY SURVEYOR  
ANOKA COUNTY, MINNESOTA

# W.C. on North Line of NW 1/4 Sec. 15 T32 R23

Set cast iron monument from  
area resurvey 2.2. Flush with sign  
and post on N. side.

#7 85°  
5-25-77  
H. Larson  
B. Guetzko  
J. Boettcher



# Netta